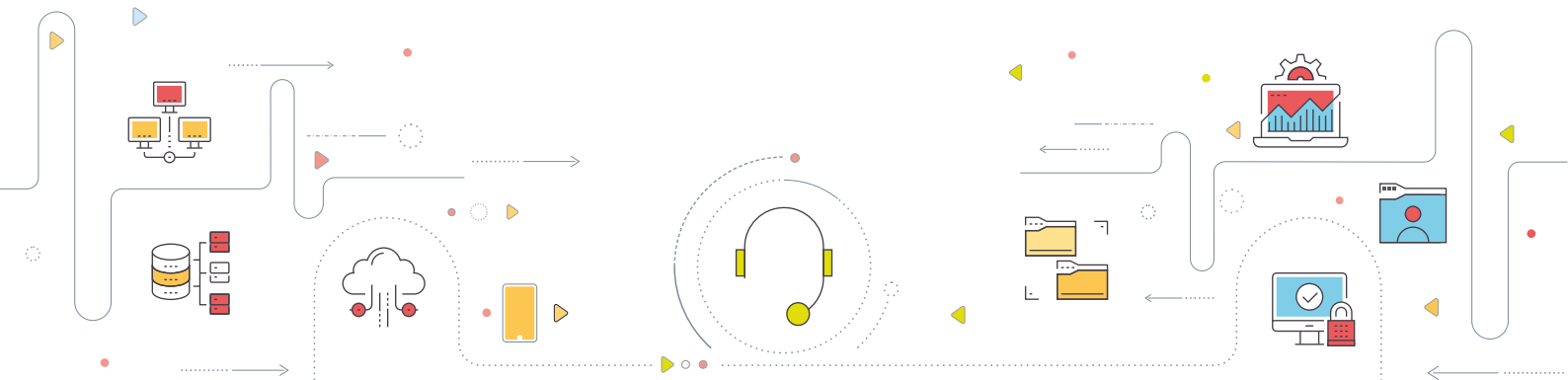




Corporation

Fact Sheet





About Zoho Corporation

Zoho Corporation, founded in 1996, is a privately held technology company with customers spread across the globe. Profitable since its inception, the organization now has millions of users around the world and offers a diverse range of products and services. As the product portfolio diversified, the organization restructured itself into three main divisions: Zoho.com, ManageEngine, and WebNMS.



Internet of things for your enterprise

- IoT Platform for connected enterprise applications.
- Customized IoT Solutions for energy, remote, and mobile asset management.
- More than 25,000 multi-vendor network management

www.webnms.com



Bringing IT together

Comprehensive IT management software for all your business needs.

- IT Service Management,
- IT Operations Management,
- Endpoint Management
- Active Directory Management
 - IT Security
 - IT Analytics

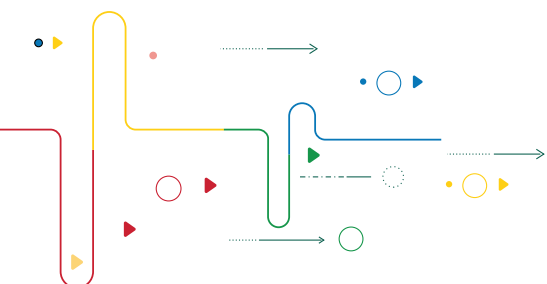
www.manageengine.com



The Operating System for Business

- Zoho has everything businesses need to boost sales, step up productivity, and manage all day-to-day activities.
- Tightly integrated.
 - Ready for mobile

www.zoho.com



History

Formerly known as AdventNet Inc., Zoho Corporation started its operations in 1996. It was profitable since its inception and expanded into the Japanese market with network management software by 2001. The company started to diversify in 2005 with the introduction of Zoho Writer. By 2009, as the product portfolio became vast and diverse, the company was rechristened Zoho Corporation, which now serves as the umbrella firm for three distinct divisions: Zoho.com, ManageEngine, and WebNMS.

Philosophy

No frills. R&D driven. One hundred percent customer-focused. Zoho Corporation believes in providing customers with the best software at affordable prices.



"A customer is the most important visitor on our premises. He is not dependent on us. We are dependent on him. He is not an interruption in our work - he is the purpose of it. We are not doing him a favor by serving him. He is doing us a favor by giving us the opportunity to serve him."

- Mahatma Gandhi



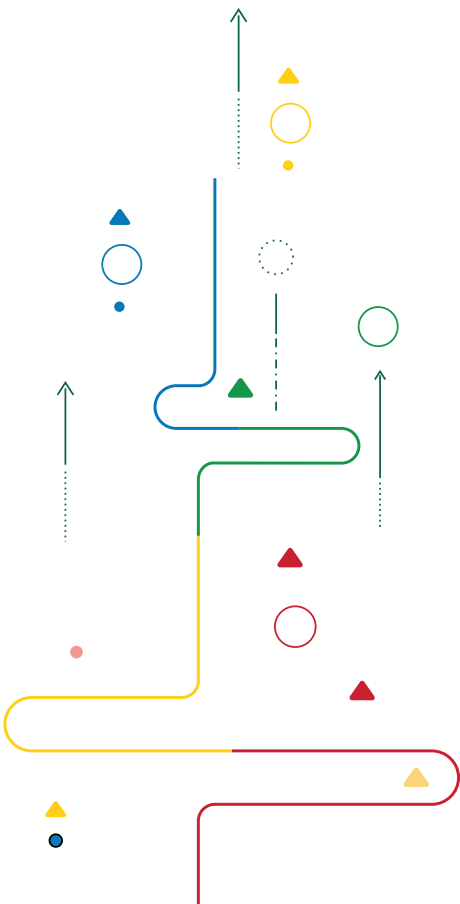
Zoho.com

Zoho's craft and passion is software. Zoho creates beautiful software to solve business problems. Over the past decade, the Zoho suite has emerged as a leader on the cloud and on people's devices. As much as Zoho loves software, its most valuable assets are its culture and people. At Zoho, people spend years mastering their craft. In an industry where technology changes at a relentless and dizzying pace, Zoho values persistence and endurance as highly as adaptability.

Zoho is committed to spending customers' money wisely. It invests more in product development and customer support than in sales and marketing. By keeping its cost of attracting customers low, Zoho keeps its prices affordable.

Zoho views itself as an integrated whole; not as a group of organizational silos that barely talk to each other, or worse, work at cross purposes. That philosophy and worldview is reflected in its product suite. The Zoho suite is as broad as it is deep. Zoho views the suite as an integrated whole, far greater than the sum of its parts.

The Zoho suite wasn't built in a day; it has taken the better part of a decade to come this far. Unlike its competitors, who periodically wake up and discover gaping product holes they have to fill urgently with acquisitions, Zoho crafts software with patience and passion. Its strategy is born of the realization that most acquisitions fail in this industry, and the customer is the one who pays the price. Zoho has made a commitment to offer real depth along with breadth in its offerings.



ManageEngine

ManageEngine crafts comprehensive IT management software with a focus on making IT admins' jobs easier. Its 90+ products and free tools cover everything that IT needs, all at affordable prices. From network and device management to security and service desk software, ManageEngine is bringing IT together for an integrated, overarching approach to optimizing IT.

Managing IT together



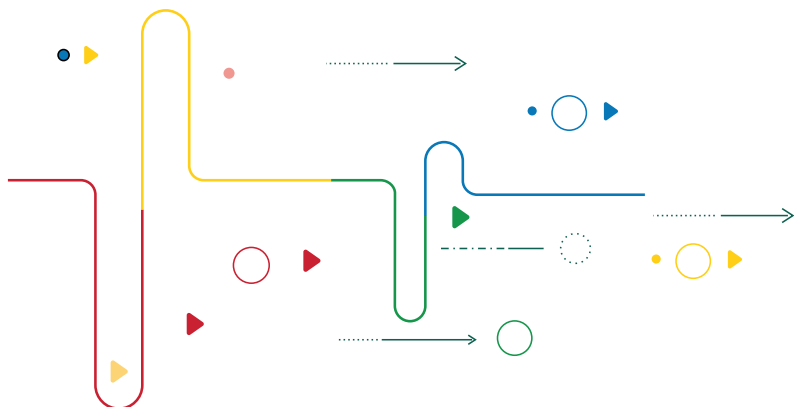
ManageEngine offers more than 90 tools to help manage all aspects of IT operations, including networks, servers, applications, desktops, mobile devices, service desks, Active Directory, and security. And they have built the tools from the ground up with contextual integrations to make sure that their customers can manage IT together, too.

Simplifying IT together



ManageEngine wants to make IT simple. And no, that does not mean limited functionality. It means fully functional products that have everything that customers need, laid out simply in a UI that won't frustrate users. On top of that, ManageEngine's applications are easy to download, install, configure, and deploy—no third-party support services needed.

ManageEngine's product philosophy is driven by the customer and it has built a strong, in-house R&D team to back that up. With over 4,000 employees working around the clock to turn product requests into realities, they all rely on ManageEngine products, too. Software licenses aren't limited by the size of



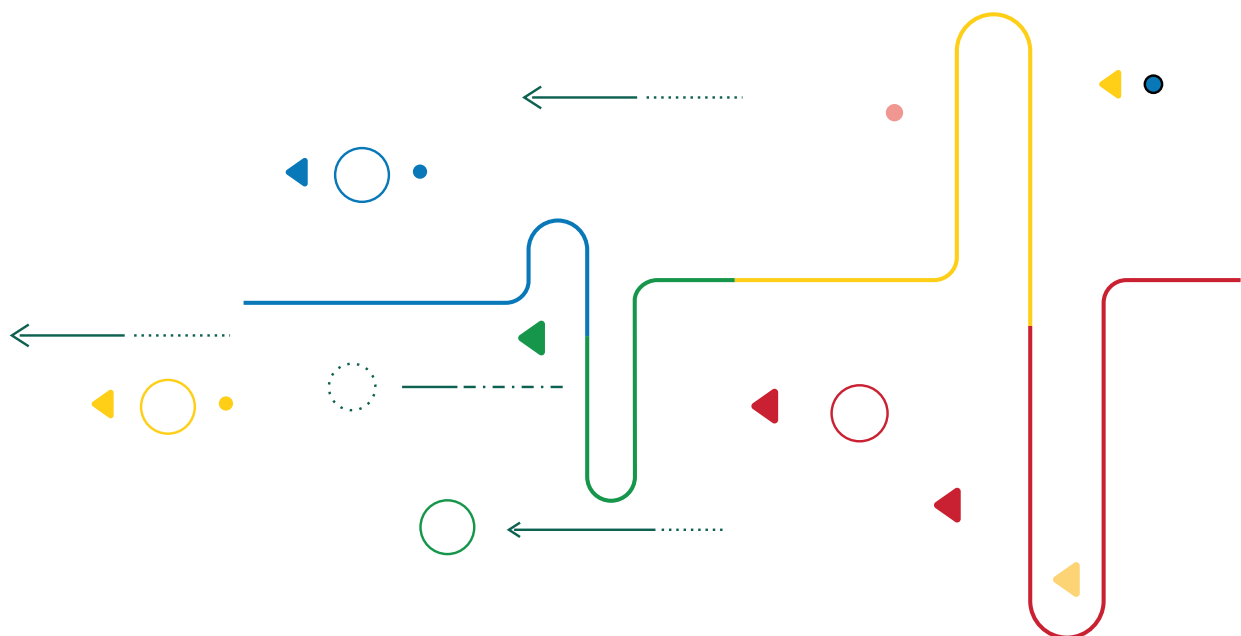
Valuing IT together

their customers' businesses or what their futures might look like. ManageEngine's software scales with the customer, from small local outfits to large multi-national enterprises.

More expensive doesn't always mean better. In fact, ManageEngine has focused its efforts on in-house engineered solutions and taken a simple, transparent approach to the business of IT management software. ManageEngine does not pay extra for an aggressive sales team or costly consultants, and these savings are passed on to the customer. ManageEngine's pricing doesn't include any hidden costs and is available directly on the company's website.

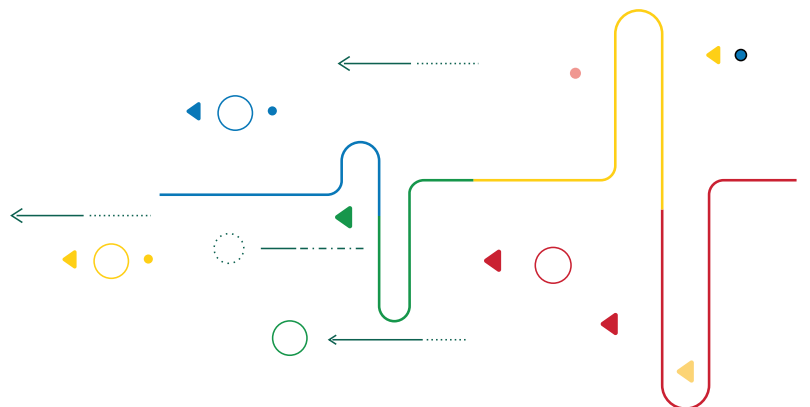
Bringing IT together

At the end of the day, IT is about fulfilling customers' needs. As organizations prepare for the IT management challenges ahead, ManageEngine will lead the way with new solutions, contextual integrations, and other advances that can only come from a company singularly dedicated to its customers. And as a division of Zoho Corporation, ManageEngine will continue pushing for the tight business-IT alignment that its customers will need to seize future opportunities.



WebNMS, the IoT software division of Zoho Corporation, is a leading provider of an enterprise IoT platform and solutions that maximize the potential of connected business infrastructure. WebNMS' platform is designed to streamline enterprise operations by optimizing energy expenses and managing geographically dispersed, capital-intensive assets. This key player in the market encourages an enterprise-ready IoT ecosystem through its channel partners: systems integrators, software developers and resellers, sensor and gateway manufacturers, and telecom carriers.

WebNMS' flagship product, the Symphony IoT platform, is developer-friendly, customizable, and built with functionalities that promote efficiency, minimize costs, and maximize returns. EdgeX, the built-in, multi-device compatible data agent, fortifies quick data acquisition and processing, as well as time to market and develop, cutting an edge over its competition.



ManageEngine

Market Served

ManageEngine crafts the industry's broadest suite of IT management software. It has everything organizations need—more than 90 products and free tools—to manage all components of IT operations. From desktops, mobile devices, networks, and servers, to applications, service desks, Active Directory, and security, ManageEngine brings IT together.

Since 2003, IT teams have turned to ManageEngine for affordable, feature-rich software that's easy to use. ManageEngine's on-premises and cloud solutions power the IT of over 180,000 companies around the world, including three out of every five Fortune 500 companies.

90+

products and free tools for real-time IT management.



More than **3** million IT users.



Award-winning product portfolio and best-in-class functionality.

3/5

Fortune 500 companies are ManageEngine customers



Serving companies in more than

190 countries that manage complex, multi-vendor, and hybrid IT infrastructures.

ManageEngine Products

AD360

ADAudit Plus

ADManager Plus

ADSelfService Plus

AlarmsOne

Analytics Plus

Applications Manager

AssetExplorer

Cloud Security Plus

DataSecurity Plus

Desktop Central

Desktop Central MSP

EventLog Analyzer

Exchange Reporter Plus

Firewall Analyzer

Key Manager Plus

Log360

Mobile Device Manager Plus

Mobile Device Manager On-Cloud

NetFlow Analyzer

Network Configuration Manager

OS Deployer

Office365 Manager Plus

OpManager

OpUtils

Password Manager Pro

Password Manager Pro MSP

Patch Connect Plus

Patch Manager Plus

RecoveryManager Plus

ServiceDesk Plus

ServiceDesk Plus MSP

SharePoint Manager Plus

Site 24x7

Site 24x7 APM Insight

SupportCenter Plus

ManageEngine

Free Tools

AlarmsOne
Android Ping Tool
Azure Performance Monitor
EC2 Health Monitor
EC2 Manager - Android App
Exchange Health Monitor
Free Active Directory Tools
Free Disk Monitor Lite
Free Password Expiry Reminder Tool
Free Process Manager
Free Server Health Monitor - Android App
Hyper-V Configuration Tool
Hyper-V Performance Tool
iPhone Ping Tool
Ping Tool
Process Traffic Monitor
Sharepoint Health Monitor
SNMP MIB Browser
SNMP MIB Browser Android App
SQL Health Monitor
SysLog Forwarder
VM Configuration Tool
VM Health Monitor
VM Manager Plus
WebAnalyzer Plus
WiFi Monitor Plus - Android App
WiFi Widgets for Android
Windows Admin Tools
Windows Health Monitor
Windows Server Monitor - iPhone App

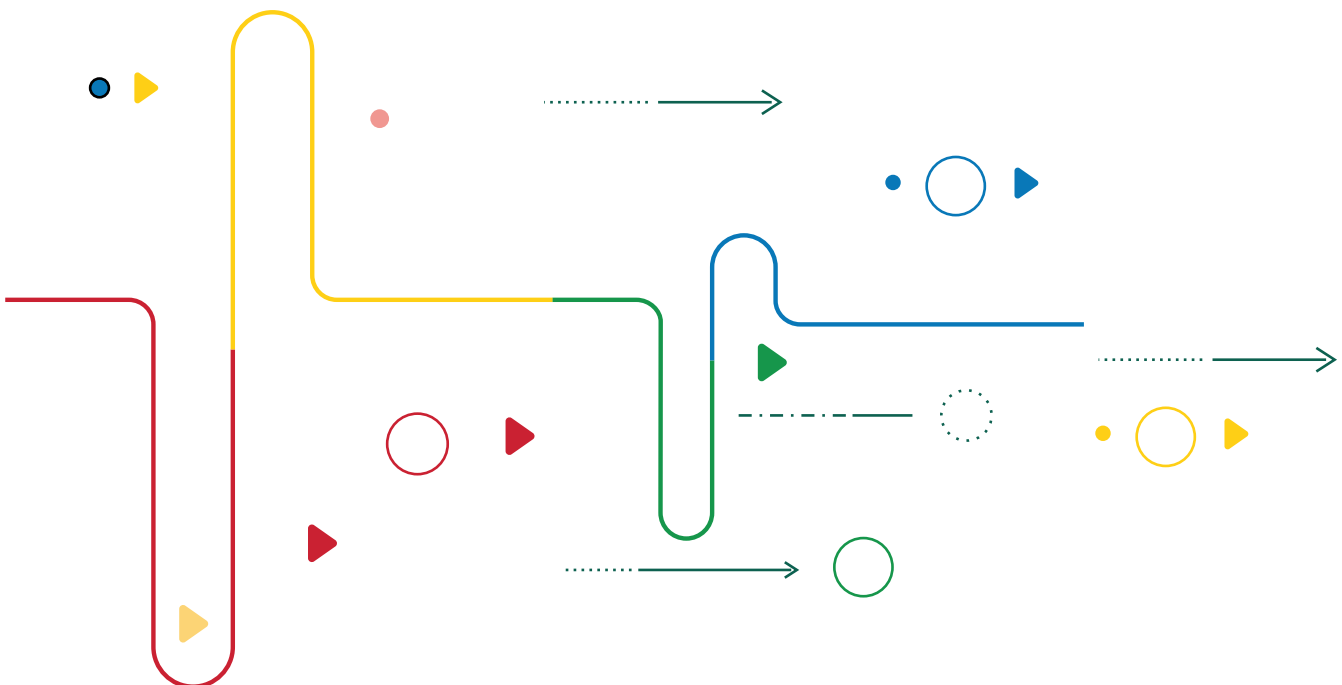
Zoho

Market Served

Zoho is the operating system for business—a single cloud platform with all the necessary applications to run a business entirely from the cloud. Businesses can acquire and manage customers using Zoho's marketing, sales and customer support applications—Campaigns, CRM and Desk—and can then empower employees to create, store and distribute content on the cloud with Zoho's productivity and collaboration applications—Office, Mail and Docs. Additionally, businesses can run their own operations on Zoho's finance and human resources applications—Books, People and Recruit.

More than 30 millions users around the world, across hundreds of thousands of companies, rely on Zoho every day to run their businesses—including Zoho itself. A business can choose to run the entire Zoho suite or just a single application. Zoho applications are available directly through zoho.com, or through an ecosystem of hundreds of worldwide Zoho partners.

Zoho is a division of Zoho Corporation., a privately-held and consistently profitable company, with more than 4,000 employees. For more information, please visit <http://www.zoho.com>.



Zoho Services

Zoho AppCreator
Zoho Assist
Zoho Books
Zoho BugTracker
Zoho Campaigns
Zoho Chat
Zoho Checkout
Zoho Connect
Zoho ContactManager
Zoho Creator
Zoho CRM
Zoho Desk
Zoho Docs
Zoho Expense
Zoho Forms
Zoho Inventory
Zoho Invoice
Zoho IT Help Desk
Zoho Mail
Zoho Meeting
Zoho Motivator
Zoho Notebook
Zoho People
Zoho Projects
Zoho Recruit
Zoho Reports
Zoho SalesInbox
Zoho SalesIQ
Zoho ShowTime
Zoho Sites
Zoho Social
Zoho Subscriptions
Zoho Survey
Zoho Vault

WebNMS

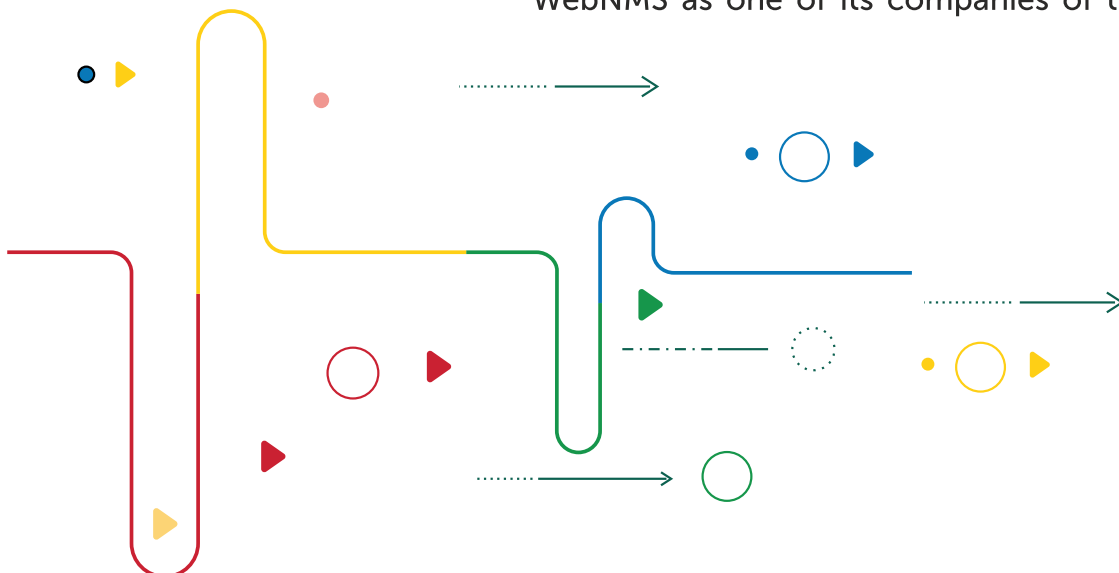


Market Served

WebNMS is a leading provider of an Internet of Things platform and solutions for connected enterprise operations.

The platform caters to three niche functionalities: energy management, remote asset monitoring, and management and location tracking with on-board diagnostics. The platform stands out amongst the competition with its well-defined enterprise capabilities and superior edge computing component, EdgeX. With EdgeX, systems integrators and solution providers can seamlessly connect to multiple devices, fetch data, and monitor and manage numerous assets from a single console.

WebNMS' IoT platform, built for enterprise IoT operations in particular, facilitates predictive maintenance, data analytics, cross functional data blending, cross-enterprise operations, and legacy device retrofitting. The platform is widely used in energy management operations, smart city projects, building management, centralized asset management, and supply chain streamlining. The major advantages of adopting the Symphony IoT platform in enterprise operations are increased uptime, seamless last mile data acquisition, simplified network edge, and seamless blending of IT and OT. Built over a seasoned telecom network framework, WebNMS IoT has won several awards and recognitions, including the Express IT award for two consecutive years. CIO Review has also chosen WebNMS as one of its companies of the month.



WebNMS offerings

IoT platform and solutions

Symphony IoT Platform

Energy and resources

Solar Farm Manager

Windmill Manager

Power Grid Monitoring Solution

Smart Lighting Solution

Smart Metering Solution

Diesel Generator Manager

Remote site solutions

ATM Site Manager

Cell Tower Manager

Data Center Infrastructure Manager

Building Infrastructure Manager

Road Infrastructure Manager

Mobile asset management

Fleet Management Solutions

Location tracking and OBD

Smart city solutions

Equipment vendor solutions

Java SNMP API

.NET SNMP API

SNMP API Android Edition

Java SNMP Agent

C SNMP Agent

SNMP Adaptor for JMX

CLI API / TL1 API

Test toolkit

Simulation Toolkit

SNMP Utilities

Agent Tester



Ownership

Zoho Corporation Pvt. Ltd.
is privately held.

Website

<https://www.zohocorp.com>

Phone

+1.925.924.9500

Fax

+1.925.924.9600

Email

info@zohocorp.com

Address

Zoho Corporation
4141 Hacienda Drive
Pleasanton, CA 94588USA

